

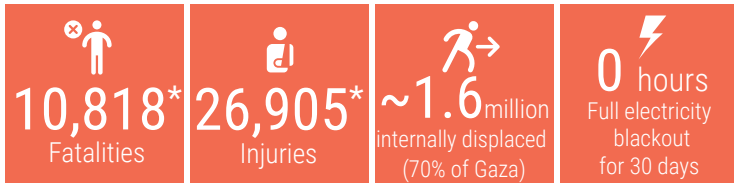
## DAY 34

### OVERVIEW

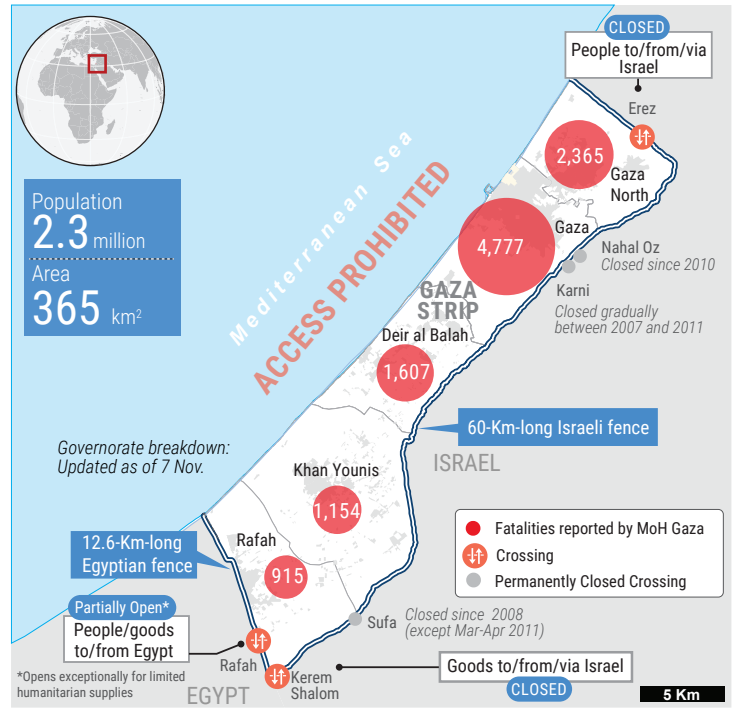
The snapshot provides a comprehensive overview of the ongoing humanitarian crisis in Gaza as of 9 November 2023, including casualties, particularly among women and children.

Significant damage has been inflicted upon critical infrastructure and essential services, affecting people's ability to maintain their dignity and basic living standards.

This snapshot highlights reported figures on the impact of hostilities on people in Gaza, where a major humanitarian crisis has unfolded.

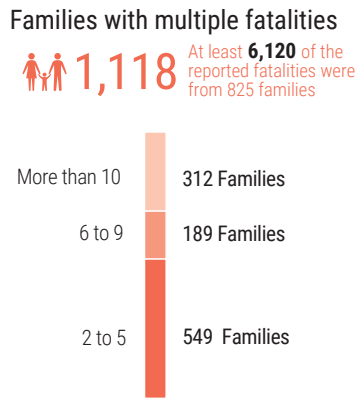
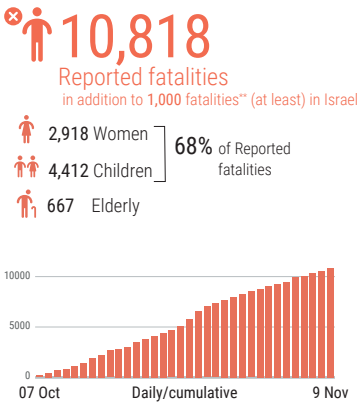


\*Reported by MoH Gaza

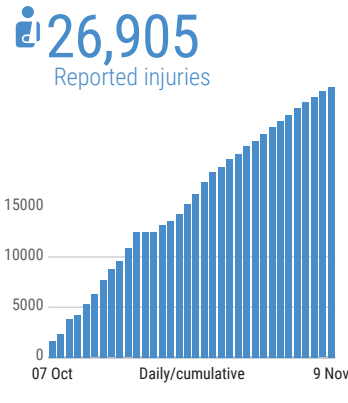


### REPORTED CASUALTIES (Cumulative) as of 9 November 2023

#### Palestinians\*

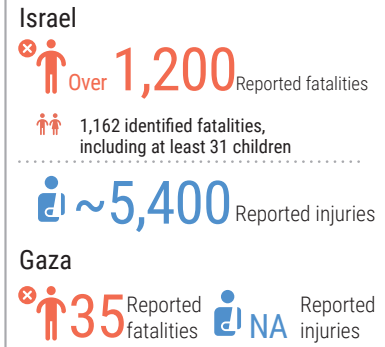


Other 2,650 people including 1,400 children reported missing and may be trapped under the rubble



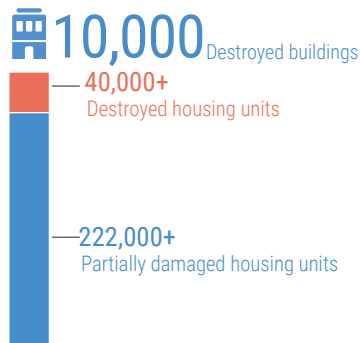
\*According to the Ministry of Health in Gaza

#### Israelis\*\*



\*\* According to Israeli media citing official sources

### DAMAGE\*



- At least 45% of Gaza's housing units reportedly destroyed or damaged
- 279 education facilities reportedly damaged
- 130 health facilities attacked
- 11 bakeries reportedly destroyed
- 18 hospitals and 40 Health care center out of service
- 51 ambulances damaged
- 20 WASH facilities damaged
- At least 3 churches and 66 mosques damaged

\*Ministry of public works and housing as of 6 Nov.

### BASIC SERVICES AND LIVELIHOODS

**FOOD SECURITY**  
Market stocks of essential food\*: Wheat flour (12 days), Vegetable oil (0 days), Pulse (0 days), Sugar (0 days), Rice: (0 day).

\*Source: WFP

The **only** operative mill cannot transform wheat due to electricity outages  
**4-6 hours** average waiting time to receive half of normal bread portion

**WATER AND SANITATION**  
**90%** less water consumption than pre-hostilities (average)  
Most of **65** sewerage pumping are not operational  
**50%** leakage in a main water pipeline between Rafah and Khan Younis  
**Two** of the **3** water pipelines from Israel are functioning

**HEALTH**  
**Shut down** over 1/2 of the hospitals and nearly 2/3 of primary health care shut down  
**At high risk** At least 1,000 kidney failure, >2,000 cancer patients, 130 neonates in incubators

**Critical shortages** of drugs, blood products and supplies (Fuel at the hospitals is being severely rationed)

**Evacuation orders** All 13 hospitals still operational in Gaza city and Northern Gaza have received evacuation orders

**EDUCATION**  
**625K (100%)** Students with no access to education  
**Over 51%** of Gaza's education facilities have been hit

**HUMANITARIAN OPERATION** at least 195 medical staff (according to the MoH), of whom at least 16 were on duty when killed (WHO), 99 UNRWA staff, 18 Palestinian Civil Defense personnel and 47 Journalists. 50 UNRWA installations damaged  
**MOVEMENT AND ACCESS** Closure of crossings with Israel. Rafah crossing with Egypt is partially open. Prohibition of sea access and restrictions near Israel's perimeter fence.

